

# MONTHLY MEMBERSHIP PROGRESS REPORT

District A 9

Results as of: 5/31/2020

GMT:

LOCATION ONTARIO

GMT CA

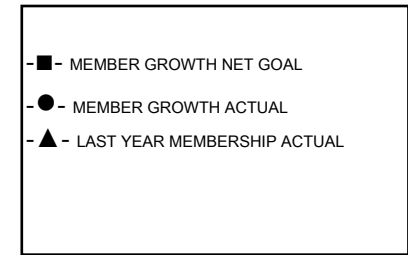
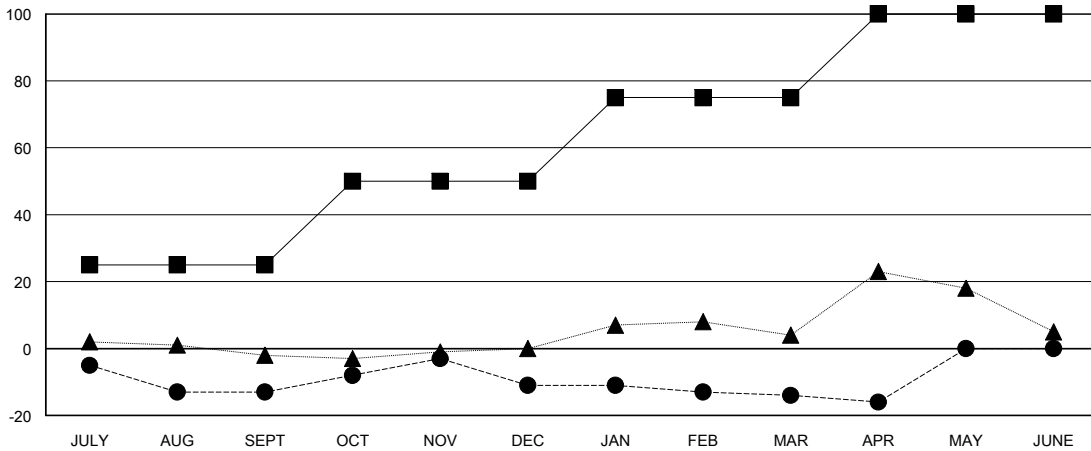
Clubs			
RESULTS FOR 2019-2020			
QUARTER	NEW CLUB GOAL	NEW CLUBS	DROPPED CLUBS
JULY/AUG/SEPT	0	0	0
OCT/NOV/DEC	1	0	0
JAN/FEB/MAR	0	0	0
APR/MAY/JUNE	0	0	0

Members			
RESULTS FOR 2019-2020			
QUARTER	MEMBER GROWTH NET GOAL	MEMBER GROWTH ACTUAL	DROPPED MEMBERS ACTUAL (including transfers)
JULY/AUG/SEPT	25	7	17
OCT/NOV/DEC	25	22	19
JAN/FEB/MAR	25	19	20
APR/MAY/JUNE	25	1	3

GOALS AND ACTUAL NEW CLUBS CUMULATIVE



GOALS AND ACTUAL MEMBERS CUMULATIVE



DROPPED CLUBS: 0	17 CLUBS OF 44 ADDED 1 OR MORE NEW MEMBERS	<b>GENDER DISTRIBUTION</b> MALE 838 (72.55%) FEMALE 317 (27.45%)
<b>DROPPED MEMBERS</b> DECEASED 19 CLUB CANCELLED 0 OTHER 40 TOTAL 59	<a href="#">CLICK HERE FOR CUMULATIVE MEMBERSHIP DATA</a>	TOTAL FAMILY UNIT MEMBERS 218 FAMILY MEMBERS PAYING HALF DUES 111